

DiM DERS İSLEME

Modülleri

UNIT 06

MOVIES

5. SINIF

ENGLISH

WORD LIST

absurd: saçma	enjoyable: eğlenceli	love: sevmek
action: aksiyon	exciting: heyecan verici	monster: canavar
actor: erkek oyuncu	entertaining: eğlenceli	movie: film
adventure: macera	evil: kötü, fena	movie theater: sinema
animation: animasyon	fantastic: harika, olağanüstü	movie types: film türleri
beautiful: güzel	friendly: arkadaş canlısı	musical: müzikal
bored: sıkılmış	friendship: arkadaşlık	prefer: tercih etmek
boring: sıkıcı	frightening /scary: korkutucu	rude: kaba
brave: cesur	funny: eğlenceli	save: kurtarmak
beautiful: güzel	great: harika	science fiction: bilim kurgu
cartoon: çizgi film	happy: mutlu	strong: güçlü
channel: kanal	hate: nefret etmek	tell lies: yalan söylemek
character: karakter	handsome: yakışıklı	terrible: berbat, korkunç
choose: seçmek	helpful: yardımsever	think: düşünmek
clever: zeki	honest: dürüst	ticket: bilet
comedy: komedi	horror: korku	travel: seyahat etmek
crime: suç, polisiye	interesting: ilginç	ugly: çirkin
documentary: belgesel	jump: zıplamak	war: savaş
drama: drama	laugh: gülmek	western film: kovboy filmi
drive: araba kullanmak	lazy: tembel	
dull: sıkıcı	lonely: yalnız	

USEFUL EXPRESSIONS

What is your favourite movie? / Favori filmin ne?	How much is a ticket? / Bilet ne kadar?
What do you think about it? / Onun hakkında ne düşünüyorsun?	What is the name of the film? / Filmin adı ne?
What kind of movies do you like? / Ne tür filmler seversin?	Can I have two tickets? / 2 bilet alabilir miyim?
What is the movie about? / Film ne hakkındadır?	What time is your favourite movie on? / Favori filmin saat kaçta?
When does it start? / Ne zaman başlar?	Do you want to watch? / izlemek ister misin?
What is on TV this evening? / Bu akşam TV'de ne var?	What about Harry Potter? / Harry Potter'a ne dersin?
Do you like watching movies? / Film izlemeyi sever misin?	What about an action film? / Aksiyon filmine ne dersin?
Who are the stars? / Oyuncular kim?	Who is the director? / Yönetmen kim?



Cartoon

Animation

Action Film

Documentary



Comedy Film

Horror Film

Western Film

Historical Film



Romantic Film

Fantasy Film

Science-Fiction Film

Drama



Exercise - 01

Do the puzzle.

The crossword puzzle grid consists of the following words:

- Across:**
 - 1: **STAR WARS** (8 letters)
 - 2: **MISSION: IMPOSSIBLE** (14 letters)
 - 3: **ICE AGE: COLLISION COURSE** (14 letters)
 - 4: **ONCE UPON A TIME IN THE WEST** (18 letters)
- Down:**
 - 1: **RINGS** (6 letters)
 - 2: **DUMB AND DUMBER** (11 letters)
 - 3: **PANDAS** (7 letters)
 - 4: **BABAM VE OGLUM** (10 letters)

Exercise - 02

Complete the sentences with the expressions below.

- documentary
- cartoon
- comedy
- horror
- science fiction

- a. films are very funny. I laugh a lot.
- b. There are robots and space ships in the films.
- c. Look at this elephant. It's very big. I like watching
- d. There are ghosts and monsters in films.
- e. "Tom and Jerry" is my favourite



LET'S REMEMBER

EXPRESSING LIKES AND DISLIKES



I like watching action films, but I don't like horror films.



Really? I love horror films, but I hate animations.

✓ We express our likes and dislikes with the following expressions. (Sevdiğimiz ve sevmediğimiz şeyleri anlatmak için aşağıdaki ifadeleri kullanırız.)



Likes

- ♥ like
- ♥♥ enjoy
- ♥♥♥ love



Dislikes

- ✗ don't like
- ✗✗ dislike
- ✗✗✗ hate



I like "Ice-Age".



I love "Spiderman".



"Star wars" is my favourite film.



What's your favourite film?



My favourite film is "Titanic".



Exercise - 03

Match the movie types with the posters below.



a historical film



b fantasy film



c animation



d comedy film



e cartoon



f action film

Exercise - 04

Look at the table and write **True** or **False**.



Eric	👍👍👍👍	👍👍	👍👍👍👍	👎👎👎👎
Betty	👎👎👎	👍👍👍	👍👍	👍👍👍👍
Nick	👍👍	👍👍	👍👍👍👍👍	👍👍👍👍
Amy	👎👎	👎👎	👎👎👎	👍👍

- a. Betty loves horror movies.
- b. Amy doesn't like comedy films.
- c. Nick hates action films.
- d. Eric likes animations.
- e. Eric and Nick like comedy films.
- f. Betty doesn't like action films.
- g. Amy loves horror films.
- h. Nick loves animations.



STATING PERSONAL OPINIONS



- ✓ We ask someone's opinion about something with **What do you think about?** . (Birin bir konu hakkında ne düşündüğünü sorarken **What do you think about ...?** soru kalıbını kullanırız.)
- ✓ We state personal opinion about something with **I think** and **In my opinion ...** . (Bir konu hakkında kişisel düşüncemizi ifade ederken **I think** ve **In my opinion** yapılarını kullanırız.)

DESCRIBING CHARACTERS AND PEOPLE



Bruce: What is Hulk like?

Jack : He's strong and brave.

- ✓ We ask personality with **What's ... like?**. (Kişilik özelliğini sorarken **What's ... like?** soru kalıbını kullanırız.)

Personality Adjectives

brave
(cesur)

good
(iyi)

honest
(dürüst)

frightening
(korkutucu)

kind
(kibar)

friendly
(arkadaşça)

helpful
(yardımsever)

evil
(kötü)

cute
(sevimli)

funny
(komik)

Jane : What does Snow White look like?

Liz : She's beautiful with long hair.

- ✓ We ask physical appearance with **What does ... look like?**. (Fiziksel görünümü sorarken **What does ... look like?** soru kalıbını kullanırız.)

Physical Appearance Adjectives

beautiful
(güzel)

handsome
(yakışıklı)

ugly
(çirkin)

tall
(uzun)

short
(kisa)

fat
(şişman)

thin
(zayıf)

young
(genç)

old
(yaşlı)

Adjectives About Films

exciting
(heyecanlı)

boring
(sıkıcı)

great
(mükemmel)

funny
(komik)

frightening
(korkutucu)







interesting
(ilginç)



Exercise - 05







Match the adjectives with the pictures below.

- brave
- evil
- funny
- friendly
- frightening
- helpful

- a. 
.....
- b. 
.....
- c. 
.....
- d. 
.....
- e. 
.....
- f. 
.....

Exercise - 06

Choose the correct adjectives.

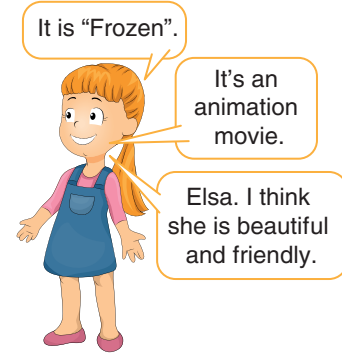
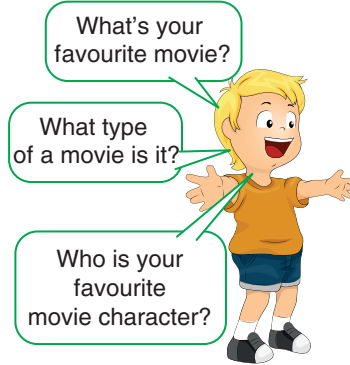
- a.  Garfield is a movie character. He is **lazy / hardworking**.
- b.  Little Red Riding Hood is a(n) **evil / cute** girl.
- c.  Batman is a **frightening / brave** hero.
- d.  Sponge Bob is very **honest / evil**.
- e.  Robin Hood lives in the forest and he is **frightening / helpful**.
- f.  Sid is a **funny / bad** animation character.



MAKING SIMPLE INQUIRIES

✓ While asking questions about movies, we use the following structures. (Filmler hakkında soru sorarken aşağıdaki yapıları kullanırız.)

What kind of movies do you like?	Ne tür filmleri seversin?
What do you think about the movie characters?	Film karakterleri hakkında ne düşünüyorsun?
What's your favourite movie?	Favori filmin ne?
Which movie would you like to watch?	Hangi filmi izlemek istersin?
What is it about?	Konusu ne?
When is the movie on?	Film ne zaman gösterimde?
Who is your favourite movie character?	Favori film karakterin kim?
What time is the movie on?	Film kaçta başlıyor?

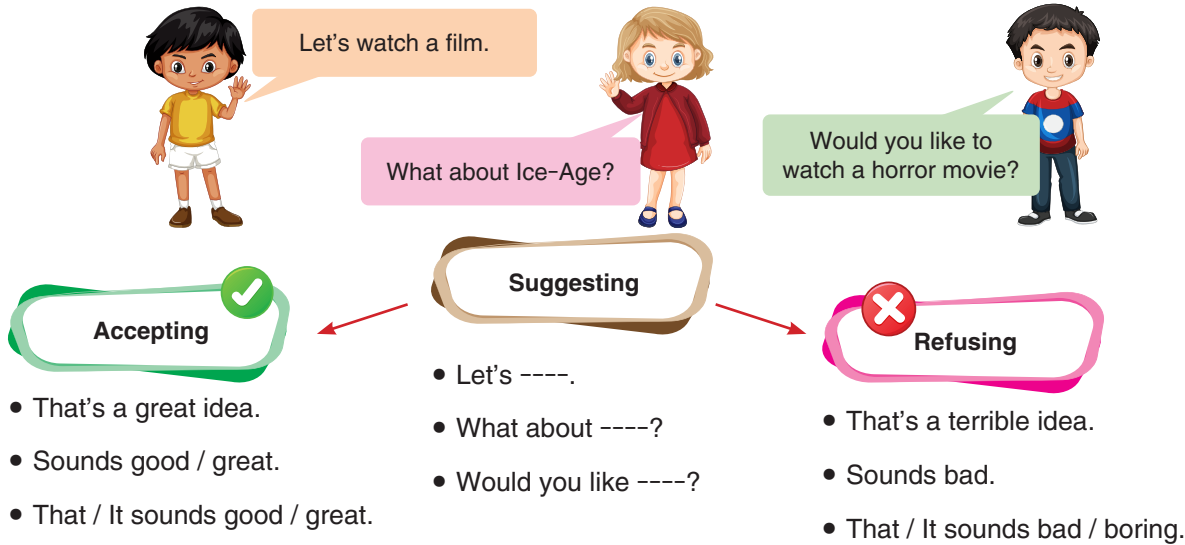


Amy : What's on today?
Sue : The Smurfs.
Amy : What type of a movie is it?
Sue : It's an animation and comedy.
Amy : What is it about?
Sue : It's about the little blue Smurfs and the evil Gargamel.
Amy : What do you think about Gargamel?
Sue : I don't like Gargamel. I think he is ugly and evil.
Amy : What time is it on?
Sue : At 2.30 in the afternoon.



MAKING SUGGESTIONS

✓ We use the following expressions to make suggestions. (Öneride bulunmak için aşağıda verilen ifadeleri kullanırız.)



Exercise - 07

a. Put the dialogue into the correct order.

- How about "Star Wars" at Palm Street Cinema?
- It's about space. It's a science-fiction film.
- I feel bored.
- That would be great.
- Let's watch a film at the cinema.
- At 12.30. Let's meet in front of the cinema at 12.00.
- Well ... What's it about?
- Great. I love science-fiction films. What time is it on?
- That's OK.

b. Write **True** or **False** according to the dialogue above.

- 1. "Star Wars" is a science-fiction film.
- 2. The film is on at quarter past twelve.
- 3. The film is about love.
- 4. They don't like science-fiction films.
- 5. The film is on TV.





Exercise - 08

Read the speech bubbles below.

a. Write the names of people under the films below.



Liz

I love watching cartoons. I think they are funny.



Peter

I like action films. I think they are exciting.



Albert

My favourite films are science-fiction films. I think they are interesting.



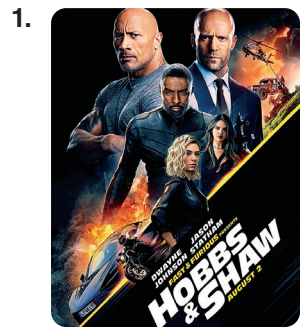
Sude

Fantasy films are really great. They are my favourite.



Dave

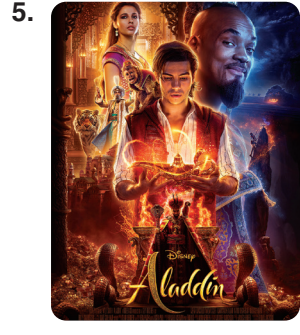
I love horror movies. I think they are frightening, but great.



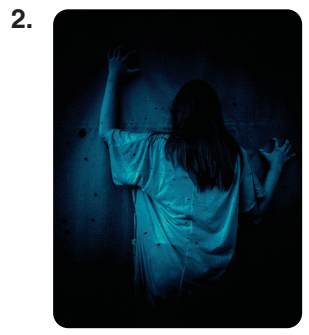
.....



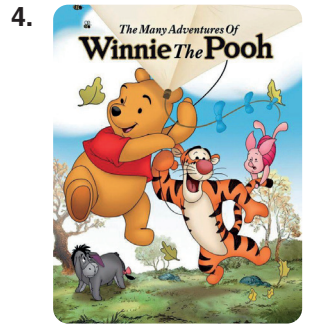
.....



.....



.....



.....

b. Answer the questions according to the people above.

1. What kind of movies does Sude like?
2. Does Peter like action films?
3. What does Liz think about cartoons?
4. Are horror movies good for Dave?
5. What does Albert think about science-fiction films?
6. What kind of movies does Liz like?



Exercise - 09

Look at the session times at Sun Movie Theatre.



SUN MOVIE THEATRE



16.15



19.30



21.00



13.45

a. Answer the questions according to the posters above.

- | | |
|--|--|
| <p>1. What time does "Ocean's 8" start?
.....</p> <p>2. Is "Deliha" a drama?
.....</p> <p>3. How many films are there at the cinema?
.....</p> | <p>4. What kind of a movie is "Cult of Chucky"?
.....</p> <p>5. Which film is an animation?
.....</p> <p>6. Is "Ocean's 8" in the evening?
.....</p> |
|--|--|

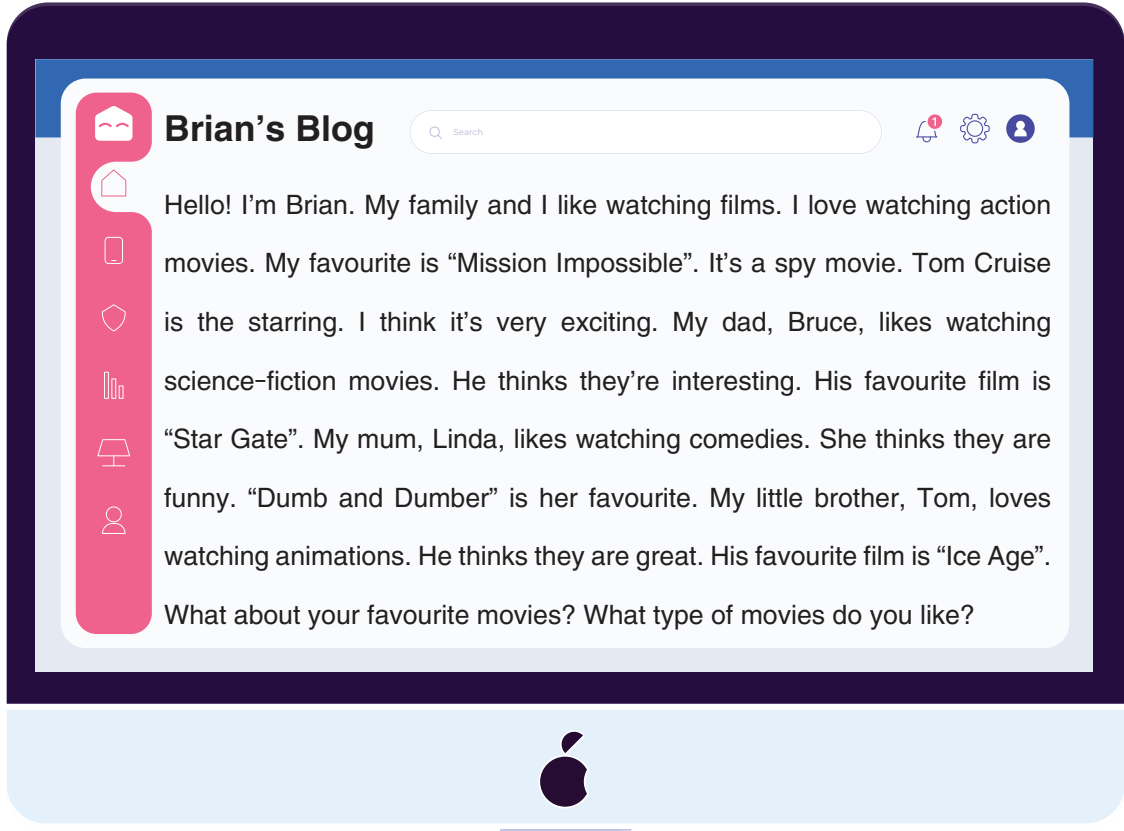
b. Write the suitable films for the people below according to the posters above.

- | | |
|---|--|
| <p>1. I love watching animations.
.....</p> | <p>3. I like action movies.
.....</p> |
| <p>2. Comedies are my favourite.
.....</p> | <p>4. I enjoy horror movies.
.....</p> |



Exercise - 10

Read Brian's Blog.



a. Answer the questions according to the text above.

- 1. What's Tom's favourite film?
- 2. Who likes watching comedies?
- 3. Does Brian like action movies?
- 4. What does Bruce think about science-fictions?
- 5. Does Linda like funny films?

b. Write True or False according to the text above.

- 1. Linda thinks comedies are funny. 5. Bruce hates interesting films.
- 2. Tom doesn't like watching "Ice Age". 6. Brian loves action films.
- 3. "Star Gate" is a science-fiction film. 7. Brian and his family like watching films.
- 4. Brian's favourite film is "Mission Impossible". 8. Tom thinks animations are boring.



955971



1.



Spiderman is really a / an ---- movie character. He can save the country when it is in danger.

Which of the following completes the sentence above?

- A) ugly
- B) brave
- C) funny
- D) evil

2.



I love "Hababam Sınıfı". It's a / an ---- movie.

Which of the following completes the sentence above?

- A) comedy
- B) action
- C) drama
- D) animation

3.

Peter: I'm bored at home. Why don't we watch a horror movie?

Jack : ----.

Peter: What about an animation movie?

Jack : Nice. I love animations, too.

Which of the following completes the dialogue above?

- A) I like horror movies
- B) Horror movies are funny
- C) I dislike horror movies
- D) Horror movies are my favourite

4.

Bruce : Let's watch a comedy movie.

Jane : ----. I like comedies.

Which of the following completes the dialogue above?

- A) That's boring
- B) I'm sorry, I can't
- C) I'd love to, but I must do my homework
- D) That's great

5.

Alice : Let's go to the cinema.

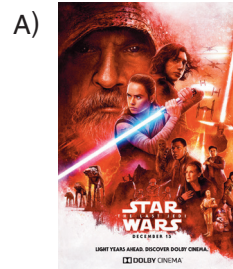
Betty : Good idea. ----?

Alice : It is about war of aliens.

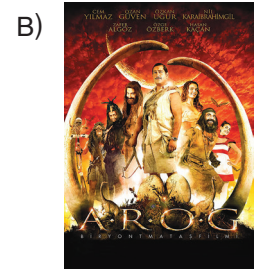
Which of the following completes the dialogue above?

- A) When is the movie
- B) What is the movie about
- C) What time is the movie
- D) What is the name of the movie

6. Which of the following matching is CORRECT?



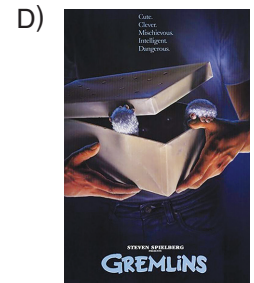
Science-fiction



Action



Animation



Drama

7.



Jason				
Tom				

According to the table above, which of the following is CORRECT?

- A) Jason doesn't like watching films.
- B) Tom likes watching frightening films.
- C) Jason hates animations.
- D) Tom loves comedy films.

8.



There's an animation movie at the cinema. It starts at 8.30. Its name is 'Finding Dory'.

Which of the following is CORRECT according to the text above?

- A) It is a sci-fi.
- B) The movie starts at quarter to eight.
- C) It's an animation.
- D) It's about war.

Answer the questions 9-10 according to the information below.



Movie : Spy Kids
 Type : Comedy and adventure
 Place : Star Cinema
 Time : Friday / 15.30

9. According to the given information above, which question does NOT have an answer?

- A) What is the movie about?
- B) What time is the movie on?
- C) Where is the movie on?
- D) What kind of a movie is it?

10. According to the given information above, which of the following is CORRECT?

- A) The movie is scary.
- B) The movie is funny.
- C) The movie is in the evening.
- D) The movie is at the weekend.



1.

Amy : There is a science-fiction movie at the Big Cinema. ----?
Sue : That sounds great.
Amy : Let's buy two tickets, then.
Sue : Yes, we can enjoy the movie!

Which of the following completes the dialogue above?

- A) Would you like to see it
- B) Do you like comedies
- C) What time is the movie on
- D) What is your favourite movie

2.

Mark : Would you like to watch a movie with me at the cinema?
Peter : ----?
Mark : At 14.00.

Which of the following completes the dialogue above?

- A) What time is the movie on
- B) Where is the cinema
- C) What kind of a movie is it
- D) What's the name of the movie

3.



My favourite movie character is Iron Man. I think he is ---- because he can carry heavy things.

Which of the following completes the sentence above?

- A) evil
- B) strong
- C) ugly
- D) coward

4.

Mary : Let's watch a movie!
Lucy : What do you want to watch?
Mary : What about 'Heidi'?
Lucy : ----?
Mary : It's about a little girl. She lives in the Alps with her grandfather.

Which of the following completes the dialogue above?

- A) What is the name of the movie
- B) When does it start
- C) What is it about
- D) Do you like Heidi

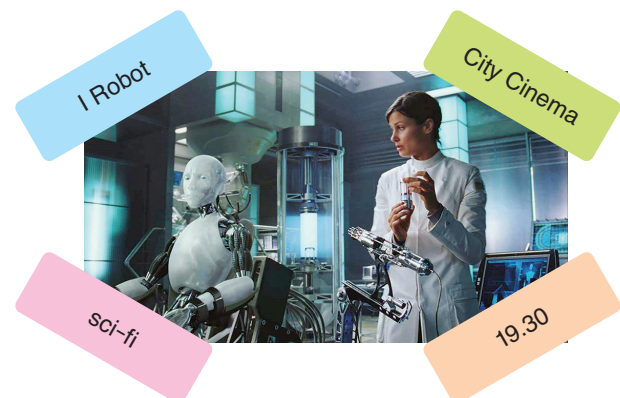
5.

- I. Great! See you there.
- II. What time is the movie on?
- III. It is at half past eight.
- IV. Let's meet in front of the cinema at eight o'clock.

Which of the following is the CORRECT order of the dialogue above?

- A) II - IV - I - III
- B) II - I - III - IV
- C) II - III - IV - I
- D) II - III - I - IV

6.



According to the given information above, which of the following is NOT correct?

- A) It is a science-fiction movie.
- B) It starts at half past seven.
- C) The movie is at the City Cinema.
- D) It is a cartoon.